

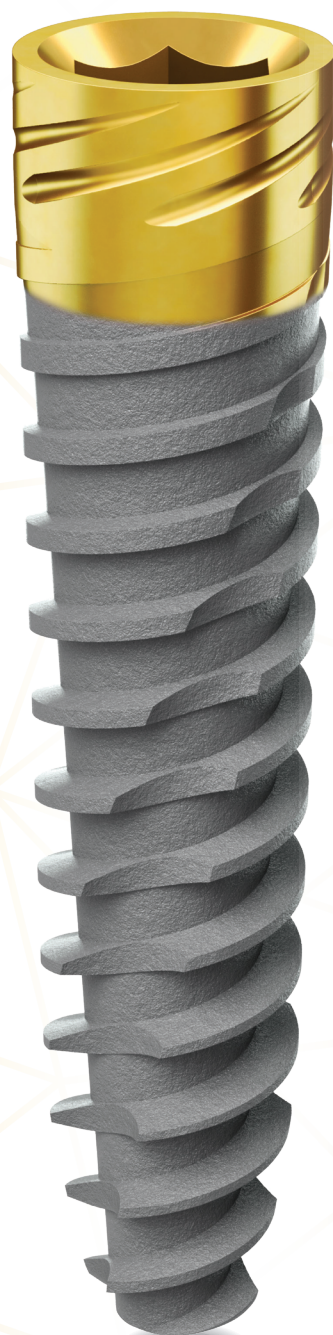


JDENTALCARE

just smile



MADE IN ITALY



A minimally invasive solution
in the atrophic posterior maxilla.

Dental Implant

JD PIERYGO[®]

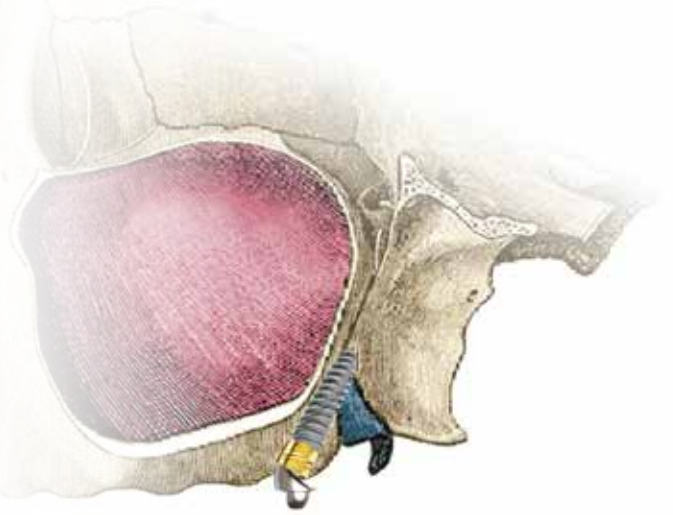
A MINIMALLY INVASIVE APPROACH.

The 4 mm anodised treatment implant collar favors the integration of tissues at every level, even if clinicians decide to leave the implant in a transmucosal position

Pure Titanium Grade 4, Ø 4 mm implant. Its specific micro-architecture design increases the implant primary stability

A minimally invasive approach available also using computer guided surgery

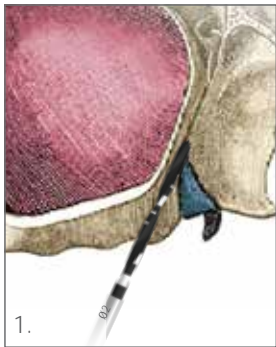
Designed to achieve a perfect anchorage in the pterygoid bone



SITE PREPARATION SEQUENCE.

JD Pterygo® implant site preparation can be performed following both non-guided and computer guided surgical protocol. It is recommended to adhere to the indications of the following drilling sequence to ensure optimal primary stability of the implant.

Non-guided protocol.



Start the osteotomy using JDNasal® drill Ø 2.0 mm at the same implant length to be inserted.



Continue using JDNasal® drill Ø 2.4 at the same implant length to be inserted.



Continue with standard twist drill Ø 2.8 mm for 8 mm.



Complete the osteotomy with standard twist drill Ø 3.2 mm at the entrance for 6 mm.

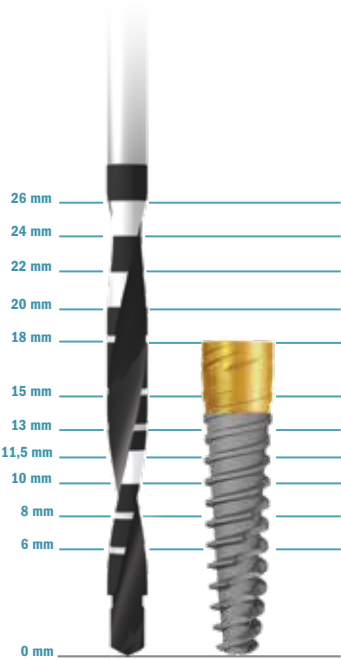
Computer guided protocol.

1. Start the osteotomy using the first JDGuided Drill JDGD24-060 Ø 2.4 x L 6 mm.
2. Continue using JD Pterygo® Guided Drill Ø 2.4 at the same implant length to be inserted (Choose among JD Pterygo® Guided drills L 13-15-18-20 mm).
3. Continue with the JDGuided Drill Ø 2.8 mm for 8 mm.
4. Complete the osteotomy with JDGuided Drill Ø 3.2 mm for 6 mm.



PRODUCT SPECIFICATIONS.

The JDPterygo® dental implant is available in the diameter and lengths shown in this chart:



IMPLANT DIAMETER	TIP DIAMETER	LENGTH			
Ø 4.0	Ø 2.4	13	15	18	20

Note:
All dimensions
are expressed
in millimetres.

PRODUCT CATALOGUE.

Implants:

PT40130:	JDPterygo®	Ø 4.0 L 13
PT40150:	JDPterygo®	Ø 4.0 L 15
PT40180:	JDPterygo®	Ø 4.0 L 18
PT40200:	JDPterygo®	Ø 4.0 L 20



Drills for non guided protocol:

JDDR20L	JDNasal® Drill Ø 2.0
JDDR24L	JDNasal® Drill Ø 2.4
JDDR28	Twist Drill Ø 2.8
JDDR32	Twist Drill Ø 3.2



Guided Drills for JDPterygo®guided protocol:

JGDG20-130	Guided Drill Ø 2.0 L13 JDPterygo®
JGDG24-130	Guided Drill Ø 2.4 L13 JDPterygo®
JGDG20-150	Guided Drill Ø 2.0 L15 JDPterygo®
JGDG24-150	Guided Drill Ø 2.4 L15 JDPterygo®
JGDG20-180	Guided Drill Ø 2.0 L18 JDPterygo®
JGDG24-180	Guided Drill Ø 2.4 L18 JDPterygo®
JGDG20-200	Guided Drill Ø 2.0 L20 JDPterygo®
JGDG24-200	Guided Drill Ø 2.4 L20 JDPterygo®



Prosthetic Solutions:

JDPterygo® connection is compatible with JDEvolution® Plus+, so please refer to this catalogue for choosing the correct prosthetic piece.



JDENTALCARE

www.jdentalcare.com